

NWS FORM E-5 <small>(11-88)</small> <small>(PRES. by NWS Instruction 10-924)</small>	U.S. DEPARTMENT OF COMMERCE NATIONAL OCEANIC AND ATMOSPHERIC ADMINISTRATION NATIONAL WEATHER SERVICE
MONTHLY REPORT OF HYDROLOGIC CONDITIONS	
TO: Hydrometeorological Information Center, W/OH2 NOAA / National Weather Service 1325 East West Highway, Room 7230 Silver Spring, MD 20910-3283	HYDROLOGIC SERVICE AREA (HSA) WFO Midland, Texas REPORT FOR: MONTH March YEAR 2025 SIGNATURE <u>J. DeBerry</u> In Charge of HSA DATE April 15, 2024

When no flooding occurs, include miscellaneous river conditions, such as significant rises, record low stages, ice conditions, snow cover, droughts, and hydrologic products issued (NWS Instruction 10-924)

☒ An X inside this box indicates that no river flooding occurred within this hydrologic service area.

March, in typical fashion, was characterized mainly by dust storms and high wind events. However, the spring convective season got off to a start near the end of the month, on March 27-28th. Thunderstorms developed mainly along and west of the Pecos. However, no hydrologic activity was reported.

Precipitation amounts from area ASOS's:

City	ASOS ID	March	February
Carlsbad, NM	KCNM	0.01"	T
Fort Stockton	KFST	0.00"	0.00"
Midland Int'l	KMAF	T	T
Odessa	KODO	0.00"	0.00"
Terrell County	K6R6	0.30"	0.00"
Wink	KINK	0.00"	0.00"

Precipitation amounts from area AWOS's:

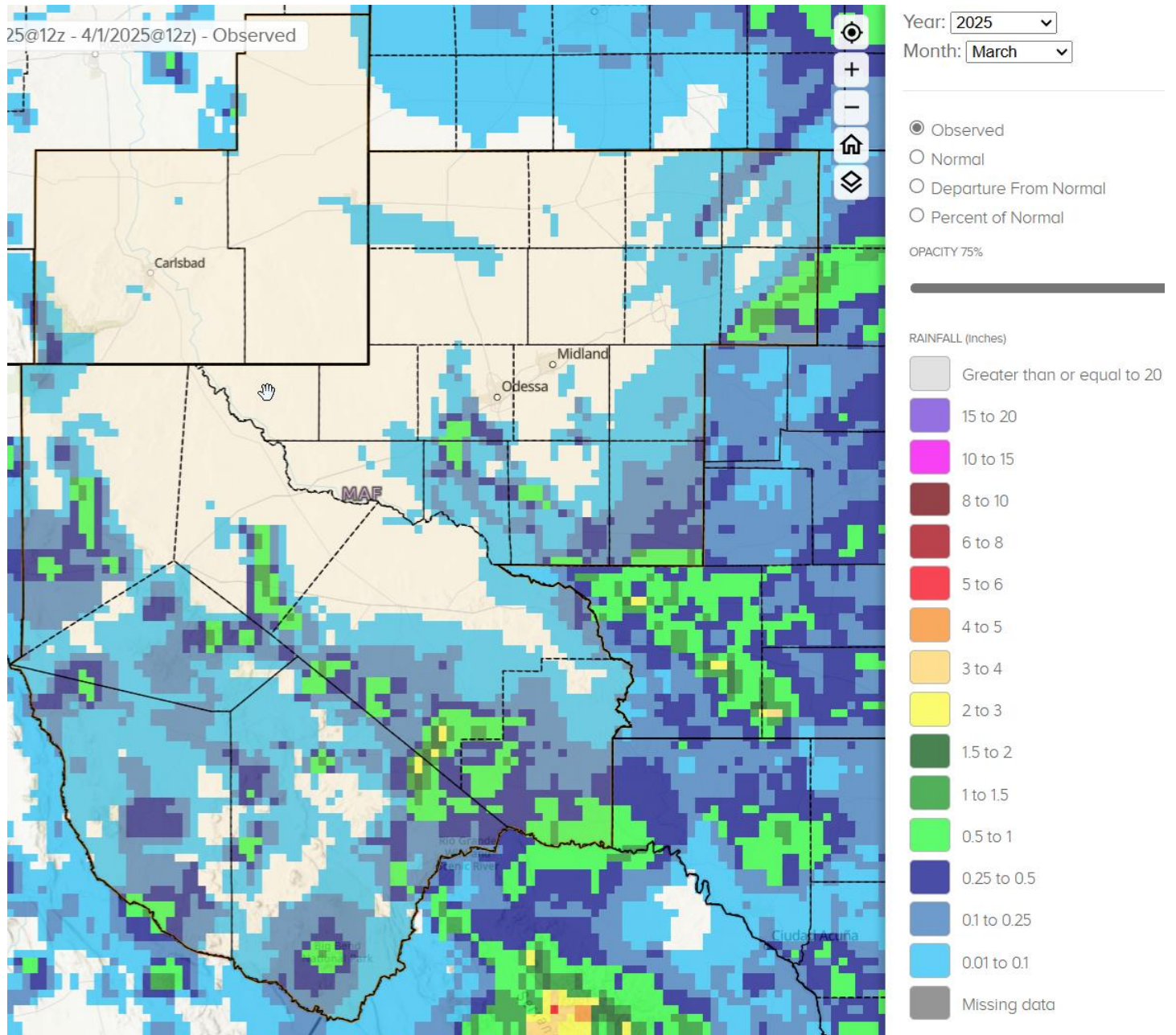
City	AWOS ID	April	March
Alpine	KE38	0.12"	0.00"
Andrews County	KE11	0.00"	0.00"
Artesia, NM	KATS	0.00"	0.00'
Big Spring	KBGP	0.00"	0.00"
Culberson County	KVHN	0.65"	0.00"
Gaines County	KGNC	0.00"	0.00"
Lajitas	KT89	0.15"	0.00"
Lamesa Municipal	KLUV	0.00"	0.00"
Marfa	KMRF	M	M
Midland Airpark	KMDD	0.00"	0.00"
Pecos County	KPEQ	M	0.00"
Presidio County	KPRS	0.29"	0.00"

Reagan County	KE41	0.48"	0.01"
Snyder	KSNK	0.03"	0.00"

Some other locations in the HSA that received notable amounts of precipitation for March were:

21N Marathon, Brewster County 0.36"
 Van Horn, Culberson County 0.75"
 Mount Locke, Jeff Davis County 1.13"
 Chisos Basin, Brewster County 1.30"

79 locations reported rainfall for the month of March, for an HSA average of 0.12".



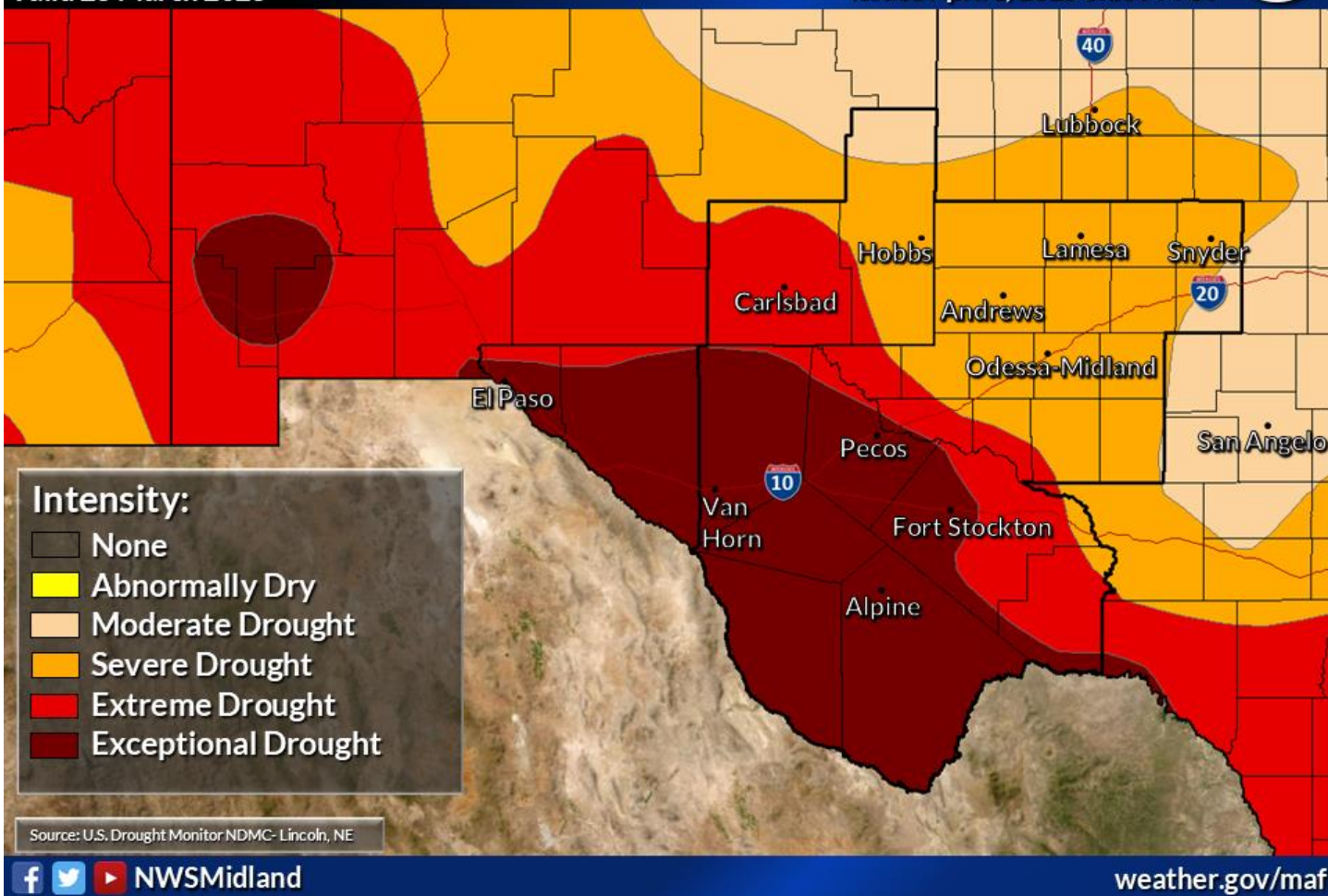
March Precipitation

Normal March precipitation for Midland International Air and Space Port is 0.68". Total precipitation for the year ending 1 April was 0.11", or 1.84" below normal.

Latest Drought Conditions

Valid 25 March 2025

Weather Forecast Office
Midland/Odessa, TX
Issued April 1, 2025 6:10 PM CT



Reservoir levels across the HSA averaged 57.8% of conservation capacity as of April 1st:

Reservoir (County, State)	April 1 Conserv Cap (%)	March 1 Conserv Cap (%)
JB Thomas (Scurry, TX)	38.9	40.3
Colorado City (Mitchell, TX)	69.8	71.6
Champion Creek (Mitchell, TX)	47.0	47.8
Natural Dam Salt Lake (Howard, TX)	48.4	48.4
Moss Creek (Howard, TX)	80.0	80.0
Brantley (Eddy, NM)	88.0	94.0
Avalon (Eddy, NM)	50.0	92.0
Red Bluff (Reeves, TX)	40.2	38.6

Non-Routine Products Issued for March:

Flash Flood Watches (FFA): 0

Flash Flood Warnings (FFW): 1

Flash Flood Statements (FFS): 1

Flood Advisories/Statements (FLS): 0

Flood Warnings (FLW): 0

Total Non-Routine Products Issued: 0

**cc: email: COE ABQ, HIC, IBWC ELP, IBWC PRD, LCRA, NWS ABQ, NWS EPZ, NWS LBB,
NWS MAF, NWS SJT, SRH, TAMU, TCEQ, USGS CNM, USGS SJT, WGRFC**